
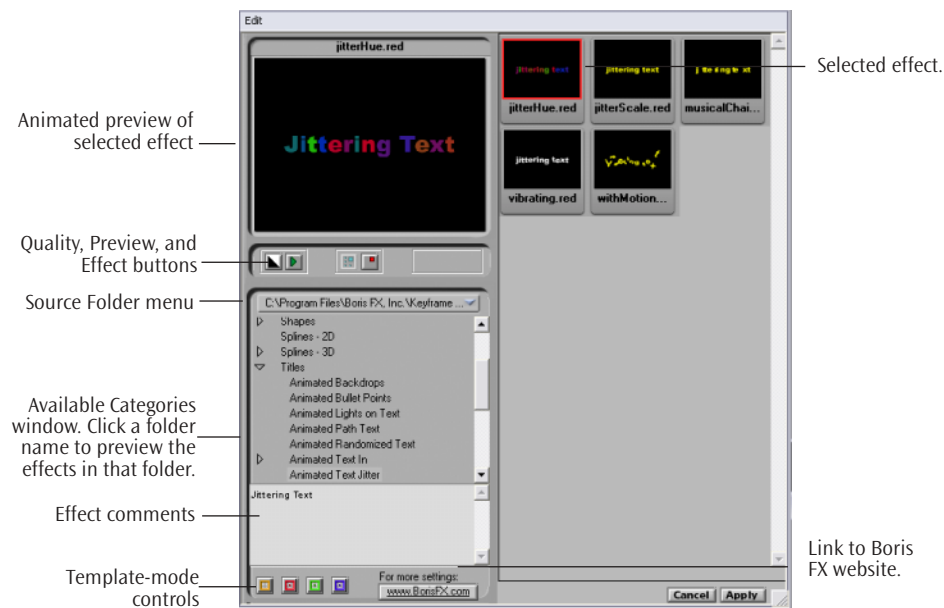


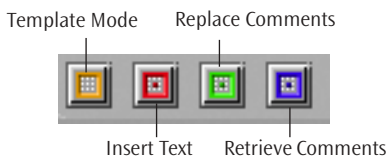
Using the New Library Browser Template Mode

You can now use the Library Browser in a special Template mode. The Boris Library Browser allows you to quickly preview and apply settings files from the KeyFrame Library. Template mode allows you to create effects directly in the Library Browser. This mode is most useful when creating text effects or when repeatedly applying the same preset. When you are in this mode, you simply replace the text for the selected effect template. This feature is only available when you use Boris Red as a plug in. It is not available in the Red Engine.

1. Access the Preferences window by choosing Edit > Preferences (Windows) or Boris Red > Preferences (Macintosh).
2. In the Appearance tab, click to select the **Show Only Browser checkbox** and click **OK** to apply your changes. Now, only the Library Browser appears when you work in the Boris Red user interface.
3. When you are in Template-only mode, the Library Browser is the only window that appears. You can also enter this mode by choosing Window > Library Browser or clicking the **Open Library Browser button** in the timeline. 



4. Click the name of any folder in the Available Categories window. Thumbnail images of each effect in that folder appear in the Available Effects window.
5. Click any thumbnail image to select the effect. A red box appears around the selected thumbnail. Press **Play** to view an animated RAM preview in the Preview window.
6. Click the appropriate Template-Mode control to edit your template.



- Clicking the yellow **Template Mode button** allows you to toggle in and out of template mode without opening the Preferences window. When you are not in Template Mode, this is the only control that appears in the Library Browser window.
- Clicking the red **Insert Text button** allows you to type into the Comments window. This text replaces the placeholder text that is included in the thumbnail. To replace multiple lines of text, press Tab between each line.
- Clicking the green **Replace Comments button** allows you to type comments into the Comments window. This text replaces the existing comments.
- Clicking the blue **Retrieve Comments button** allows you to retrieve comments into the Comments window. Click this button if you have inserted text into the comments window and now want to view the associated comments.

7. Click the **Load Effect** button to save the currently selected effect.



The effect is applied, Red closes and you are returned to your host application.

In the following example, the text from the *JitterHue.red* setting in the previous example was replaced with the words *Anne's Jitter*. To replace the text, the effect was selected, the red Insert Text button was clicked and the new text was entered into the comments window.

