

## BCC Videoscope

### Filter Category: BCC Color and Tone

#### Filter Description:

The **BCC Videoscope** filter was designed to provide users with a helpful way to measure the color and luma values in a clip. Because it is applied as a filter, it can be moved or positioned anywhere in the filter effects stacking order in the effects controls window and thereby display important information how a filter is affecting the color and luma value ranges in a given input clip.



## Helpful hints on using this filter:

A common use of the Videoscope filter is to measure color correction adjustments to a clip. Start by adding the filter to the raw clip. Then add the color grade or correction filter(s) to the clip and add a second instance of the filter after the color filter and you can toggle the Videoscope filter on or off to see the pre and post color grade and color correction image result.

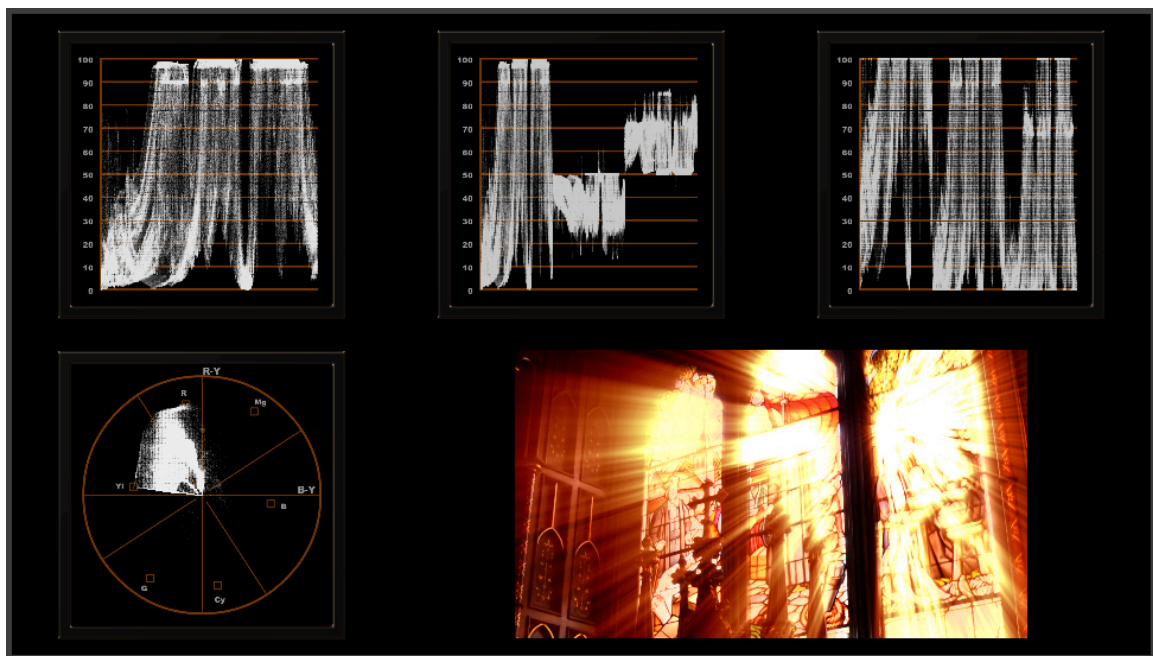
Alternatively you can simply drag a single instance of the Videoscope filter in the layer stack and achieve the same result.

## Parameter descriptions:

**Preset Load/Save mechanism** group: The preset load / save mechanism is located at the top of every filter in Boris Continuum.

Use the preset load save mechanism to load the factory installed or user generated animated and / or static presets for this filter or to save the current setting as a new animated or static preset.

**Color Scheme White checkbox:** Enable this option to set the on-screen display of the vectorscope data to white instead of color.



**Color Space pop-up:** Used to instruct the filter of the sampling frequency that the input clip is using.

**SD – ITU.R BT 601** for standard definition video NTSC and PAL

**HD 720/1080 – ITU.R BT 709** for high definition (HD) video

**HD 1035 – SMPTE 240M** for older Japanese broadcast video

**Luminance Range pop-up:** Used to set the scopes for full RGB video range of 0-255 or D1 video, which is clipped to 16-235.

**RGB** (0 – 255)

**D1** (16 – 235)

**Black Level at 7.5% IRE:** This checkbox is used to set the waveform monitor black levels from 0 to 7.5 percent (7.5 IRE) for monitoring NTSC video in North America.

**Sweep Field pop-up:** The Videoscope filter can be set to monitor the full frame, only the upper field, or only the lower field from the input clip.

**Full** – samples the full image frame

**Upper** – samples only the upper field from the frame

**Lower** – samples only the lower field from the frame

**Sweep pop-up:** The waveform beam can be set to sweep or scan the input horizontally or vertically

**Horizontal** – waveform will scan the image horizontally

**Vertical** – waveform will scan the image vertically

**Units pop-up:** The graticule overlay display used to measure the monitor waveform can be set to display in different units

**IRE** – 0–100 intensity units (Institute of **R**adio **E**ngineers)

**Volts** – 0-0.7 voltage units

**RGB** – 0–100 red, 0–100 green, 0-100 blue

**Pixel Sampling pop-up:** The Videoscope filter can be set to work with all of the pixels in the input image or a reduced set of pixels.

**Full** – samples every pixel in the image

**Half** – samples every other pixel in the image

**Quarter** – samples every fourth pixel in the image

**Eighth** - samples every eighth pixel in the image

**Background Opacity:** The monitor background can be set to fully opaque, fully transparent or any level in between. Use this slider to set the level of opacity of the monitor background. At 100 percent the background is fully opaque and at 0 it is fully transparent.

**Display Brightness:** The brightness of data that is displayed in the vectorscope can be bright or dim. Use this slider to set the brightness of the display. At 100 the data is displayed at it's brightest.

**Monitor Brightness:** The brightness of monitor bezel and the monitor display grid can be set to fully opaque, fully transparent or any value in between. Use this slider to set the opacity of the bezel and display grid. At 100 the monitor display is opaque is fully opaque and at 0 it is fully transparent.

**Waveform Monitor group:** Contains options that control the luma Waveform Monitor.

**Enable** checkbox: Enables the display of the Luma Waveform Monitor over the input clip.

**Position:** Used to set the position of the Luma Waveform Monitor over the input clip.

**Scale:** Used to set the size of the Luma Waveform Monitor.

**Source Color** checkbox: Used to set the color of the Luma Waveform Monitor.

**RGB Waveform Monitor group:** Contains options that control the RGB Waveform Monitor.

**Enable** checkbox: Enables the display of the RGB Waveform Monitor over the input clip.

**Position:** Used to set the position of the RGB Waveform Monitor over the input clip.

**Scale:** Used to set the size of the RGB Waveform Monitor.

**Mode** pop-up: Used to set the RGB data that the monitor is displaying:

**RGB:** The Red, Green and Blue signals are displayed side-by-side

**R:** Only the Red signal is displayed

**G:** Only the Green signal is displayed

**B:** Only the Blue signal is displayed

**YCbCr Waveform Monitor group:** Contains options that control the YCbCr Waveform Monitor.

**Enable** checkbox: Enables the display of the YCbCr Waveform Monitor over the input clip.

**Position:** Used to set the position of the YCbCr Waveform Monitor over the input clip.

**Scale:** Used to set the size of the YCbCr Waveform Monitor.

**Mode** pop-up: Used to set the data that the monitor is displaying:

**YCbCr Parade:** The YCbCr signals are displayed side-by-side

**Cb:** Only the Cb signal is displayed

**Cr:** Only the Cr signal is displayed

**Vectorscope group:** Contains options that control the Vectorscope display.

**Enable** checkbox: Enables the display of the Vectorscope over the input clip.

**Position:** Used to set the position of the Vectorscope Monitor over the input clip.

**Scale:** Used to set the size of the Vectorscope Monitor.

**Calibration:** Sets the Vectorscope to display either 75 percent amplitude (100 IRE equivalent) or 100 percent amplitude (130 IRE.)

**75 Percent Color Bars - 100 IRE**

**100 Percent Color Bars - 130 IRE**

**Floating Footage Enable** checkbox: Enables the displays of the filtered image clip in a separate floating window so that it can be viewed clearly, without obstruction, beside any enabled scope monitors over a black background.

**Floating Position:** Used to set the position of the floating image display.

**Footage Scale:** Used to set the size of the floating image display.

**Render Over Black:** This option renders the monitors along with the Floating Footage over a black background and is available only when the Floating Footage option is enabled.