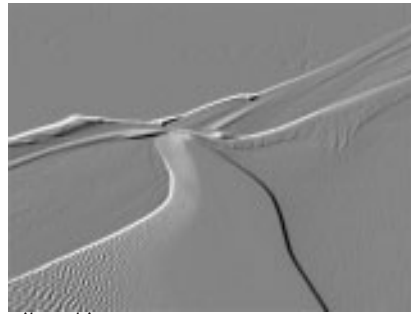


BCC Emboss Filter

Emboss simulates the appearance of an embossed or raised image by converting the source to a solid color and lighting the edges in the source's luma channel.



Source image

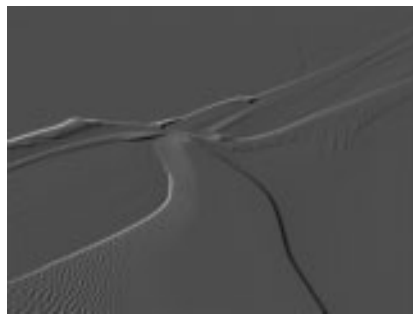


Filtered image

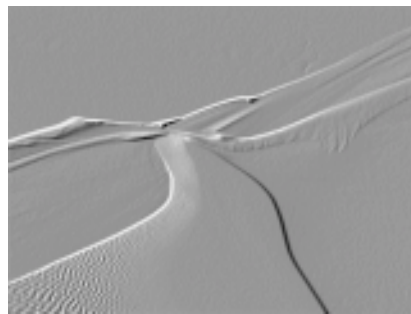
The **Emboss Channel** menu allows you to choose a channel in the image to emboss. Choose *Alpha*, *Luma*, *Red*, *Green*, *Blue* or *PixelChooser*. If you choose *PixelChooser*, the region defined in the *PixelChooser* parameter group is embossed.

Direction sets the angle between the beam of light and the vertical axis.

Intensity controls the brightness of the effect. At a value of 0, the image is completely black. Higher values lighten the image.

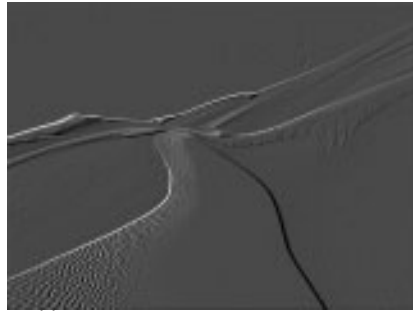


Intensity=4

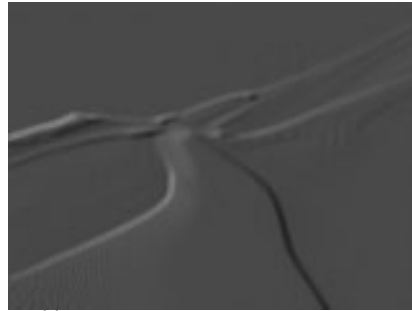


Intensity=8

Pre Blur adjusts the amount of blur applied to the image before edge detection is performed and the image is embossed. Higher values produce more blur, which tends to reduce the amount of detail and noise in the filtered image.



Preblur=0

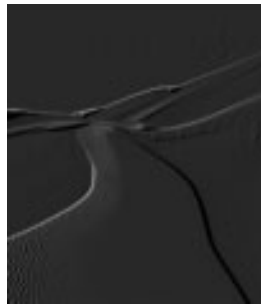


Preblur=10

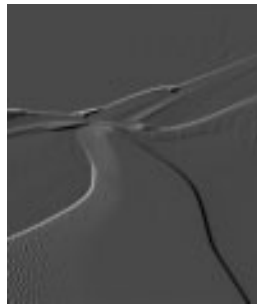
Highlight Color sets the color of the highlight areas.

Shadow Color sets the color of the shadow areas.

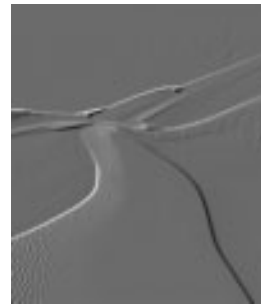
Highlight Balance adjusts the balance of highlight and shadow areas in the effect. Increasing positive values add more highlights and brighten the image. Decreasing negative values add more shadows and darken the effect.



Highlight Balance=-50



Highlight Balance=0



Highlight Balance=50

Many hosts process media one field at a time which can cause flickering to occur on filtered effects. The **Reduce Flicker menu** allows you to reduce flicker in the rendered image. The only way to evaluate a deflicker setting is to render and play back the effect on an NTSC monitor. Choose from the following options in the Reduce Flicker menu.

- **1-2-1** mixes each pixel with the pixels above and below it, with the input pixel getting twice the weight as the ones above and below. For After Effects users, this works the same as applying the AE Reduce Flicker filter at a setting of 0.5.
- **2-3-2** provides more softening than 1-2-1.
- **1-1-1** provides the most softening for effects that still contain flicker with the above options.
- **Off** is the default. If Off is chosen, no deflickering will be done.

The **Apply Mode menu** determines how the filter is composited over the source image.



For information on the available apply modes, see Appendix A in the User Guide.

Apply Mix controls the mix of the specified Apply Mode with the *Normal* apply mode. If the Apply Mode is Normal, Apply Mix has no affect. If Apply Mix is 0, Apply Mode has no affect. Increase Apply Mix to blend the Apply Mode setting with the Normal apply mode.

Mix with Original blends the source and filtered images.

The PixelChooser Parameter Group

The PixelChooser is included in many Boris filters and provides several methods to selectively filter an image.



For more information on the PixelChooser, see Chapter 10, “The PixelChooser” in the User Guide, or open the help file for the standalone PixelChooser filter.